



## Supports for raised floors **PP LEVEL DUO MAXI**

### Description

PP Level Duo Maxi is a line of supports for laying self-supporting raised flooring in squares or tiles with 2, 3 or 4 mm joints. Such substrates with specific heads are used for laying ceramic tile planks with the aluminum joist system or for laying wood or WPC Decking flooring.

With PP Level Duo Maxi it is possible to choose between fixed or self-levelling head in an instant directly during laying, this choice can be made easily thanks to the special Fixed Head Ring built into the base. By inserting it between the head and the screw we obtain a fixed head support while by not inserting it the support automatically becomes self-levelling and able to compensate for slopes of the support surface of up to 5%.

The supports consist of polypropylene elements composed of a base, a screw equipped with an anti-unscrewing lock, and a series of heads to be chosen according to the type of flooring to be placed.

Height adjustment is carried out from above using a special adjustment key and acts directly on the screw also it is possible to increase the height of the supports by using the P1/10 and P1/80/TE extensions.

The heads produced in bi-material (PP+TPE) make it possible to abate footfall noise by cushioning the contact between the tiles and the supports.

PP Level Duo Maxi are the ideal solution for terraces, pool edges, walkways on roofs and roof gardens.

There are also numerous installation accessories dedicated to height adjustment, lifting of slabs and vertical perimeter buffering.

### Materials

#### PP

Polypropylene, colour black, resistant to both acid and basic solutions and to atmospheric agents.

Classification of reaction to fire (UNI EN 13501-1:2012) Euroclass F.

Operating temperature -40 ° C + 75 ° C.

The mechanical characteristics remain unchanged over time.

#### TPE

Noise-proof pads in thermoplastic rubber, resistant to abrasion and impact.

#### Natural aluminium (joists)

Al-Mg-Si Alloy heat treated to T6 temper (6060 T6).

These profiles are made by extrusion.

They are well-resistant to chemical and atmospheric agents.

#### Stainless steel (clips)

AISI 304 - DIN 1.4301

Featuring a substantial resistance to the principal chemical and atmospheric agents, lime and mortar, as well as adhesives for tiles and cleaning agents. Recommended for use even in the food industry, hospitals, pools, general exterior environments, etc.

## Environmental impact

Recyclable, non dangerous waste.

## Surfaces of use

On any waterproof membrane.  
On any solid and compact laying surface.

## Properties and general characteristics

Base diameter	: 205 mm
Head diameter	: 130 mm (art. PPLM/T2, PPLM/T3, PPLM/T4, PPLM/TD)
Support surface	: 330 cm <sup>2</sup>
Spacer tab thickness	: 2, 3, 4 mm (art. PPLM/T2, PPLM/T3, PPLM/T4)
Height of spacer tabs	: 11,5 mm (art. PPLM/T2, PPLM/T3, PPLM/T4)
Hardness PP	: 90 shore
Slope compensation	: 5%
Reaction to fire ((UNI EN 13501-1:2012)	: Euroclass F
Operating temperature	: -40°C +75°C

## Laying

The product is laid dry, without adhesives or other fixings.

## Care and maintenance

### PP and TPE

They do not require special maintenance.

### Aluminium

These need no particular maintenance and are easily cared for with colorless alcohol diluted in water or with normal detergents, though not acid-based products (e.g. hydrochloric or hydrofluoric acid).

### Stainless Steel

The stainless surfaces can be polished with the adequate products, commonly found in stores.

## Fire Control Measures

In case of fire, extinguish with fire-fighting chemical products, dry sand or solid fire-extinguishing agents.

## Note

All indications and instructions here have come from our own experience to be understood as purely informative and will have to be confirmed through exhaustive practical experience.

Profilpas will not be held responsible for any personal injury or material damage from improper use of the product.

The user is responsible for establishing whether the product is suitable for the task and likewise must assume all responsibility for incorrect laying of material.

Head (PP) with built-in anti-noise rubber (TPE).



Screw



Full support base (330 cm<sup>2</sup>)

Holes for water drainage

Ring to make the head fixed



**S/28/39B**  
h. 28-39 mm



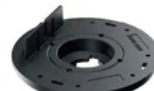
**M/38/57B**  
h. 38-57 mm



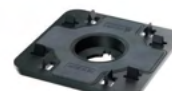
**L/56/91B**  
h. 56-91 mm



**PPLM/T2-3-4**  
Testa fuga 2-3-4 mm  
Head for 2-3-4 mm joint



**PPLM/TD**  
Testa per decking  
Head for decking floors



**PPLM/TA**  
Testa per travetto  
in alluminio  
Head for aluminium joist



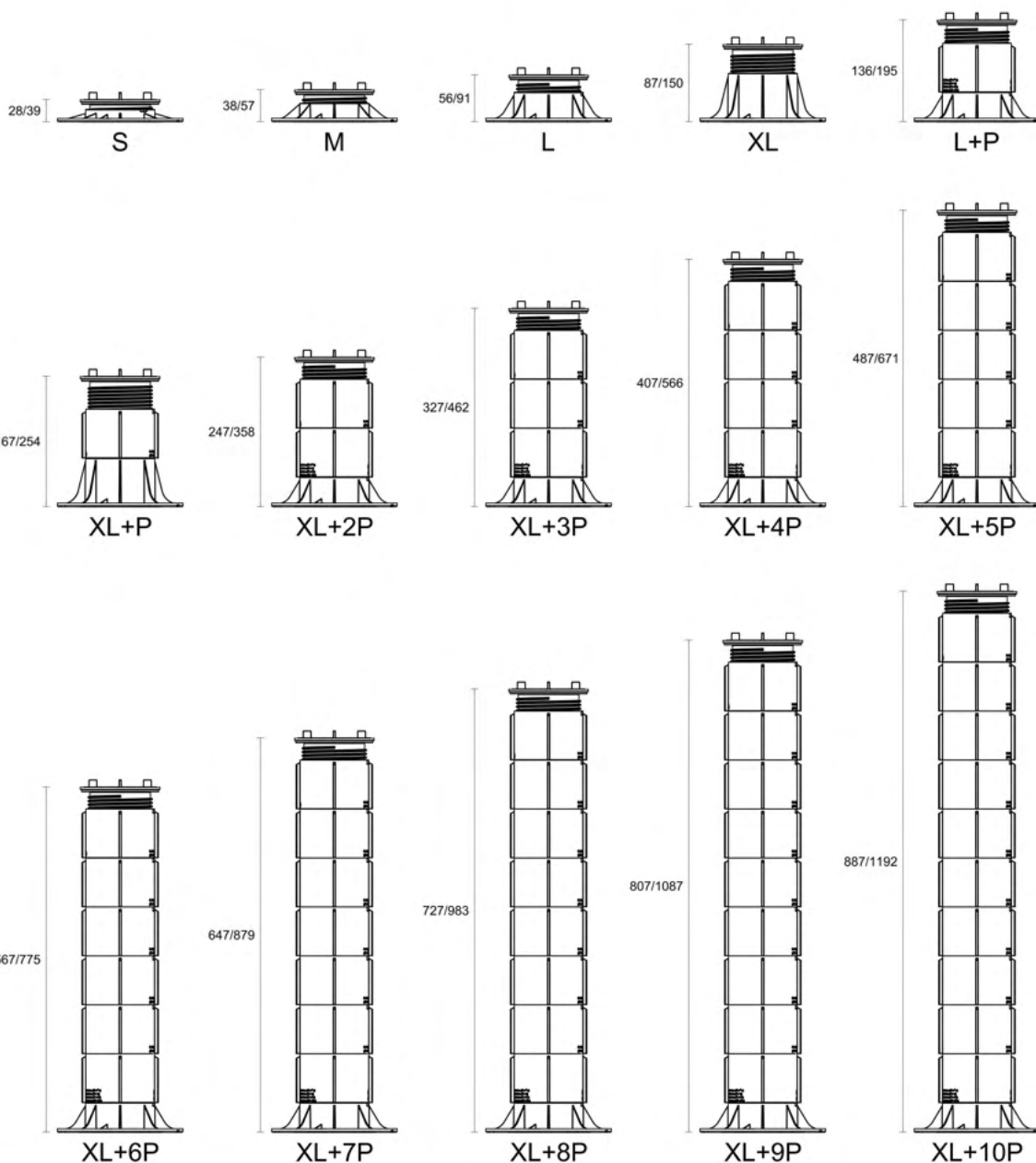
**XL/87/150B**  
h. 87-150 mm



**P1/10**  
Prolunga h. 10 mm  
Extension h. 10 mm



**P1/80TE**  
Prolunga h. 80 mm  
Extension h. 80 mm



## PP Level DUO MAXI



S/28/39B



M/38/57B



L/56/91B



XL/87/150B



P1/10



P1/80TE



PPLM/T2  
PPLM/T3  
PPLM/T4

### PP LEVEL DUO MAXI - BASE + SCREW

ART.		code	pack	pallet
<b>S/28/39B</b>	base + screw adjustable from h. 28 to 39 mm	19250	24 pcs	1152 pcs
<b>M/38/57B</b>	base + screw adjustable from h. 38 to 57 mm	19251	24 pcs	1152 pcs
<b>L/56/91B</b>	base + screw adjustable from h. 56 to 91 mm	19252	24 pcs	672 pcs
<b>XL/87/150B</b>	base + screw adjustable from h. 87 to 150 mm	19253	24 pcs	480 pcs

no partial packaging

### EXTENSIONS FOR PP LEVEL DUO MAXI

ART.		code	pack	pallet
<b>P1/10</b>	extension h. 10 mm	19369	15 pcs	1800 pcs
<b>P1/80TE</b>	extension h. 80 mm	19254	24 pcs	960 pcs

no partial packaging

<b>L/56/91B+P1/80TE</b>	=	136/195 mm	<b>XL/87/150B+(6xP1/80TE)</b>	=	567/775 mm
<b>XL/87/150B+P1/80TE</b>	=	167/254 mm	<b>XL/87/150B+(7xP1/80TE)</b>	=	647/879 mm
<b>XL/87/150B+(2xP1/80TE)</b>	=	247/358 mm	<b>XL/87/150B+(8xP1/80TE)</b>	=	727/983 mm
<b>XL/87/150B+(3xP1/80TE)</b>	=	327/462 mm	<b>XL/87/150B+(9xP1/80TE)</b>	=	807/1087 mm
<b>XL/87/150B+(4xP1/80TE)</b>	=	407/566 mm	<b>XL/87/150B+(10xP1/80TE)</b>	=	887/1192 mm
<b>XL/87/150B+(5xP1/80TE)</b>	=	487/671 mm			

### PP LEVEL DUO MAXI - Self-levelling head for ceramic floors

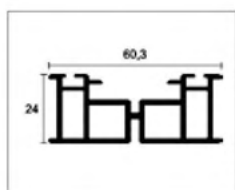
ART.		code	pack	pallet
<b>PPLM/T2</b>	head for 2 mm joints	19255	48 pcs	3840 pcs
<b>PPLM/T3</b>	head for 3 mm joints	19256	48 pcs	3840 pcs
<b>PPLM/T4</b>	head for 4 mm joints	19257	48 pcs	3840 pcs

no partial packaging

## PP Level DUO MAXI



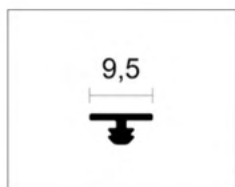
PPLM/TA



PPL/T1



PPL/D4



PPL/GM50  
PPL/GM200



PPL/GR1

### PP LEVEL DUO MAXI - Joist

ART.		code	pack	pallet
<b>PPLM/TA</b>	head for aluminium joist	19259	48 pcs	3840 pcs
<b>PPL/T1</b>	natural aluminium joist L. 240 cm	19260	8 pcs	
<b>PPL/D4</b>	4-mm spacer for PPL/T1 joist	19398	500 pcs	
<b>PPL/GM50</b>	noise-proof rubber for PPL/T1 joist - 50 meters roll	19263	1 pc	
<b>PPL/GM200</b>	noise-proof rubber for PPL/T1 joist - 200 meters roll	19264	1 pc	
<b>PPL/GR1</b>	connection joint for PPL/T1 joist	19265	250 pcs	

no partial packaging

### PP LEVEL DUO MAXI - Decking

ART.		code	pack	pallet
<b>PPLM/TD</b>	head for decking	19258	48 pcs	3840 pcs
<b>PPL/5030/T</b>	natural aluminium joist for decking - section 50x30 mm - length 200 cm	19389	8 pcs	160 pcs
<b>PPL/TD/GR</b>	connection joint for decking joist	19387	12 pcs	
<b>PPL/TD/TT</b>	T connection joint for decking joist	19388	20 pcs	

no partial packaging



PPLM/TD



PPL/5030/T



PPL/TD/GR



PPL/TD/TT



## PP Level DUO MAXI



S/28/39B



M/38/57B



L/56/91B



XL/87/150B



P1/10



P1/80TE



PPLM/T4F

### PP LEVEL MAXI FIX - BASE + SCREW

ART.		code	pack	pallet
<b>S/28/39B</b>	base + screw adjustable from h. 28 to 39 mm	19250	24 pcs	1152 pcs
<b>M/38/57B</b>	base + screw adjustable from h. 38 to 57 mm	19251	24 pcs	1152 pcs
<b>L/56/91B</b>	base + screw adjustable from h. 56 to 91 mm	19252	24 pcs	672 pcs
<b>XL/87/150B</b>	base + screw adjustable from h. 87 to 150 mm	19253	24 pcs	480 pcs

no partial packaging

### EXTENSIONS FOR PP LEVEL MAXI FIX

ART.		code	pack	pallet
<b>P1/10</b>	extension h. 10 mm	19369	15 pcs	1800 pcs
<b>P1/80TE</b>	extension h. 80 mm	19254	24 pcs	960 pcs

no partial packaging

<b>L/56/91B+P1/80TE</b>	=	136/195 mm	<b>XL/87/150B+(6xP1/80TE)</b>	=	567/775 mm
<b>XL/87/150B+P1/80TE</b>	=	167/254 mm	<b>XL/87/150B+(7xP1/80TE)</b>	=	647/879 mm
<b>XL/87/150B+(2xP1/80TE)</b>	=	247/358 mm	<b>XL/87/150B+(8xP1/80TE)</b>	=	727/983 mm
<b>XL/87/150B+(3xP1/80TE)</b>	=	327/462 mm	<b>XL/87/150B+(9xP1/80TE)</b>	=	807/1087 mm
<b>XL/87/150B+(4xP1/80TE)</b>	=	407/566 mm	<b>XL/87/150B+(10xP1/80TE)</b>	=	887/1192 mm
<b>XL/87/150B+(5xP1/80TE)</b>	=	487/671 mm			

### PP LEVEL MAXI FIX - Fixed head for ceramic floors

ART.		code	pack	pallet
<b>PPLM/T4F</b>	fixed head for 4 mm joints	19261	48 pcs	3840 pcs

no partial packaging

with fixed head PPLM/T4F the ranges of the bases+screws are to be considered 3 mm lower, therefore the heights will be S: 25 to 36, M: 35 to 54, L: 53 to 88, XL: 84 to 147.

## PP Level DUO MAXI



CR/M



PPL/CT



PCC/01



PCC/02



PCC/03



PCC/04



PCC/05



PPL/S



PPL/DT



PPL/DLB



PPL/V



PPL/MS



PPL/GS

### ACCESSORIES FOR PP LEVEL DUO MAXI - PP LEVEL DUO® - PP LEVEL FIX

ART.		code	pack
CR/M	adjustment key (for 4 mm joints)	19376	12 pcs
PPL/CT	insert for screwdriver drill	19306	1 pc
PCC/01	perimeter clip (base + head)	19382	30 kit
PCC/02	corner clip (base + head)	19383	4 kit
PCC/03	wall clip in stainless steel	19384	50 pcs
PCC/04	perimeter clip for double joist system (base + head)	19386	30 Kit
PCC/05	wall clip in polypropylene	19377	200 pcs
PPL/S	rubber mat diam. cm 21 x 0,2 thick.	19385	100 pcs
PPL/DT	levelling disk for head diam. cm 12 x 0,2 thick.	19378	100 pcs
PPL/DLB	levelling disk for base diam. cm 21 x 0,2 thick.	19379	100 pcs
PPL/V	battery-powered vacuum suction cup	19302	1 pc
PPL/MS	slab lifting handle (from 39 to 62 cm)	19304	1 pc
PPL/GS	tile lifter for 4 mm joints	19305	1 pc

no partial packaging